



Formerly known as Siemens Westinghouse Technical Services



POWER AND DRIVE SYSTEM SOLUTIONS

We are staffed with competent technical people to work on Green Field Projects and existing electrical and drive system for the Offshore & Onshore Drilling, Marine and Industrial Applications.

OFFSHORE & ONSHORE DRILLING APPLICATION

ENGINEERING

- ♦ VMS & PMS Topology Design
- ♦ Device Co-Ordination Study
- ♦ Harmonic Filter Design
- ♦ Power System Design
- ♦ Preliminary Design
- ♦ Short Circuit Study
- ♦ Harmonic Study
- ♦ Detail Design

SCOPE OF SUPPLY

- ♦ Main and Emergency Generator Switchboard
- ♦ Independent Thruster Control / Joystick
- ♦ Generator Power Adaptation System
- ♦ Complete New Land Drilling Rig
- ♦ Propulsion Converter System
- ♦ Vessel Management System
- ♦ Power Management System
- ♦ Main Switchboard and MCC
- ♦ Ship Services Switchboard
- ♦ Power System Protection
- ♦ Intelligent Power Plant
- ♦ DC Drilling Motor
- ♦ Propulsion Motor



AC DRILLING DRIVE

- ♦ Main and Emergency Generator Switchboard
- ♦ 6/12/24 Pulse Converter Transformer
- ♦ AC Drilling Motor (Traction Motor)
- ♦ Ship Services Transformer
- ♦ VFD Drilling System

DC DRILLING DRIVE

- ♦ DC Drilling Motor (Traction Motor - GE 752 or equivalent)
- ♦ Silicon Control Rectifier (SCR) Switchboard
- ♦ AC Generator Switchboard
- ♦ Generator

For use on:

- ♦ Exploration Platform
- ♦ Production Platform
- ♦ Offshore Drilling Rig
- ♦ Land Drilling Rig
- ♦ FPSO
- ♦ Marine Vessels, etc

MARINE APPLICATION

COMPLETE DESIGN ENGINEERING CAPABILITY

- ♦ Preliminary Design
- ♦ Engineering Study
- ♦ Detail Design
- ♦ Procurement / Production
- ♦ Testing and Commissioning

Applying advanced engineering solutions, electrical system and packaging, SWTS's foray into the Marine, Onshore and Offshore drilling industries has achieved unprecedented success in meeting and exceeding stringent classification standards requirement of ABS, DNV, Lloyds, etc.



MARINE APPLICATION

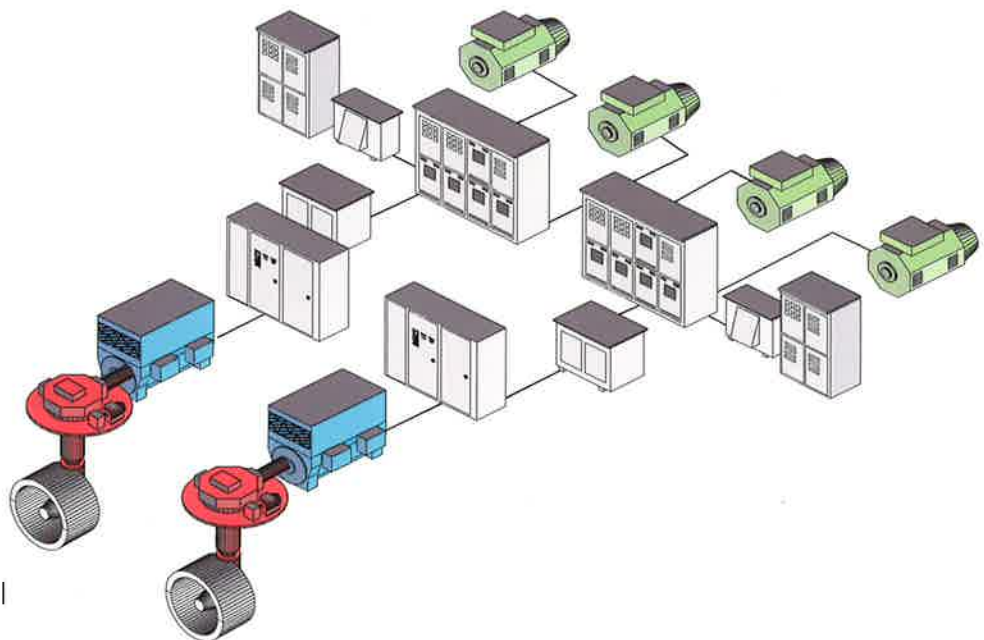
- ♦ Anchor Winch
- ♦ Electric Propulsion
- ♦ Power Management System
- ♦ Vessel Management System
- ♦ Joystick and Thruster Control
- ♦ Monitoring and Alarm System
- ♦ Power Generation and Distribution System
- ♦ Interface with Dynamic Positioning System
- ♦ New, Upgrade, Refurbishment and Modernization

DRILLING APPLICATION

- ♦ Generator Control System
- ♦ Integrated Electrical System
- ♦ Propulsion & Thruster Drive System
- ♦ Drilling Drive System (SCR and VFD)
- ♦ Anchor Winch, Cementing/Cutting/Re-Injection
- ♦ Mud Pump, Draw Work, Top Drives/Rotary Table
- ♦ Drilling & Propulsion Drive Transformer and Motor

PACKAGE

- ♦ Motor
- ♦ Transformer
- ♦ SCADA System
- ♦ MV/LV Switchgear
- ♦ DC Variable Speed Drive
- ♦ Variable Frequency Drive
- ♦ Power Management System
- ♦ Vessel Management System
- ♦ Motor and Generator Controls
- ♦ Low Harmonics Multi-Pulse System
- ♦ Auto and Manual Synchronizing Control
- ♦ Import & Export of Power from/into Grid
- ♦ Load Shedding and Load Sharing Control



INDUSTRIAL APPLICATION

New Project and Modernization of existing electrical power installation:-

- ♦ Preliminary Design
- ♦ Engineering Study
- ♦ Detail Design
- ♦ Overall Single Line Drawing
- ♦ Procurement and/or production
- ♦ Installation
- ♦ Testing and commissioning
- ♦ Selection of various manufacturers such as Siemens, Cutler Hammer, Areva, General Electric, Fuji Electric and others to suit application needs
- ♦ Local team of field service engineers for after-sales services on a 24-hour basis
- ♦ Local Engineering team for easy face-to-face communication and interface
- ♦ Knowledgeable team of people for sourcing of spare parts to support field service requirements
- ♦ Availability of an extensive range of field testing and measuring equipment and instrument
- ♦ Mechanical service support for any On-Site machining during installation



MARKET SEGMENT

- ♦ Steel
- ♦ Water
- ♦ Cement
- ♦ Oil Refinery
- ♦ Pulp & Paper
- ♦ Petrochemical
- ♦ Pharmaceutical
- ♦ Utilities - Power Station

www.swtspl.com
mktg@swtspl.com

SINGAPORE

10 GUL AVENUE
SINGAPORE 629654
Tel : (65) 6861 4466
Fax : (65) 6869 6517

THAILAND

3 MOO 6 PUTTHAMONTHON VII RD.,
HOMKRED, SAMPRAN,
NAKORNPATHOM 73110, THAILAND
Tel : (66-34) 312 089
Fax : (66-34) 312 106/7
Email: marc1@cscsoms.com
admin@marcthailand.com

TAMBOL MAPTAPHUT
AMPHUR MUANG, RAYONG
RAYONG PROVINCE
THAILAND
Tel : (66-38)681 998
Fax : (66-38)691 059
Email: marcrayong@csloxinfo.com

www.marcthailand.com

INDONESIA

BY PASS KRIAN KM 31.5
SIDOARJO - EAST JAVA
INDONESIA.
Tel : (6231)842 0801/843 5639
Fax : (6231)849 4419
Email: smael@indosat.net.id

CHINA

HUANGPU, GUANG ZHOU
PC510727, CHINA
Tel : (8620) 8238 9933
Fax : (8620) 8237 9065
Email: GTME998@21cn.com



Certificate SG99/16831



from *Westinghouse*.....
Siemens Westinghouse...
to **SWTS**